

Product Name: Galaxy IP44 Rated COB LED Cabinet Light 2.6W

Product Code: K01-0100



### Kit Contents

- LED cabinet light with micro connector

### Important Safety Information

The rated inputting voltage must be 9 -16V DC. You should use a driver to convert the mains voltage to e 9-16V DC.

The luminaire shall under no circumstances be covered with insulating material.

During normal use, the object lighted must not exceed a temperature of 95°C.

Installation should be carried out by a qualified electrician.

This product may contain substances that can be hazardous to the environment if not disposed of properly.

Electrical and electronic equipment should never be disposed of with household waste.

### Installation



- 1** Cut out diameter is 56mm for cabinet light.



- 2** If you are blind mounting and want to conceal the cable and plug, a 8mm diameter hole is required.



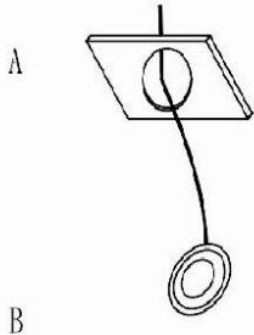
- 3** Each light is fitted with a 2m cable c/w micro plug. Plug the micro plug into the driver's connector block (driver may not be supplied with lights)

- 4** Connect driver to 240V power supply (driver may not be supplied with lights)

## INSTALLATION GUIDE

Product Name: Galaxy IP44 Rated COB LED Cabinet Light 2.6W

Product Code: K01-0100



5

Put the cabinet light in the mounting surface.

### Other Information

Specifications:

K01-0100 is a low voltage LED cabinet light, which is 2.6W in wattage and 9-16V DC in rated voltage.



For further details, prices and/or to order contact

+44 (0)1302 741941 | [sales@tlwglobal.com](mailto:sales@tlwglobal.com) | [tlwglobal.com](http://tlwglobal.com)

TLW Brunel House, Brunel Close, Harworth, Doncaster, South Yorkshire, DN11 8QA