

Product Name: Slim Rectangle LED Panel Light 6W

Product Code: K01-0191



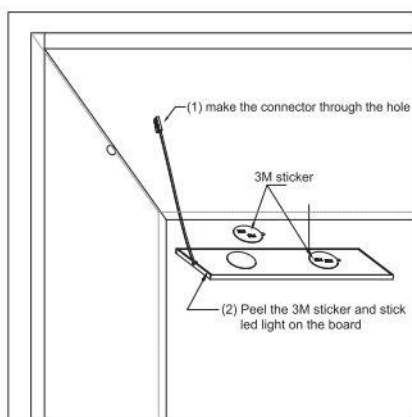
Kit Contents

- LED cabinet light with micro connector

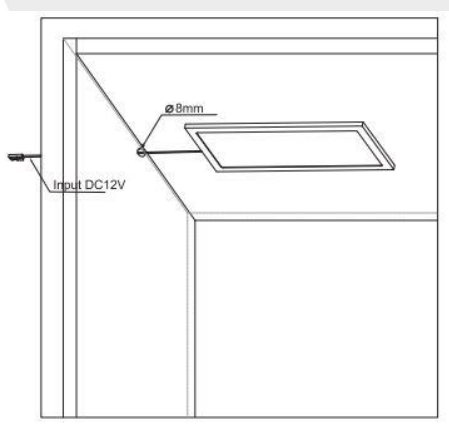
Important Safety Information

Installation should only be carried out by a qualified electrician.
Do NOT connect directly to the mains supply.

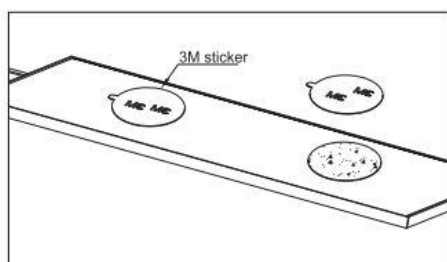
Installation



- 1 Create a 8mm diameter hole for the connector cable to reach the LED driver.



- 2 Thread the connector through a hole to the LED driver.



- 3 Peel the 3M VHB sticker.

- 4 Stick the LED light onto the board.

- 5 Connect driver to 240V power supply
(driver may not be supplied with lights)

INSTALLATION GUIDE

Product Name: Slim Rectangle LED Panel Light 6W

Product Code: K01-0191



Other Information

Specification:

Size: 200x100x5.3mm

Work voltage: DC12V

Power: 6W

Colour: White

Lighting colour: Warm White/ Natural White

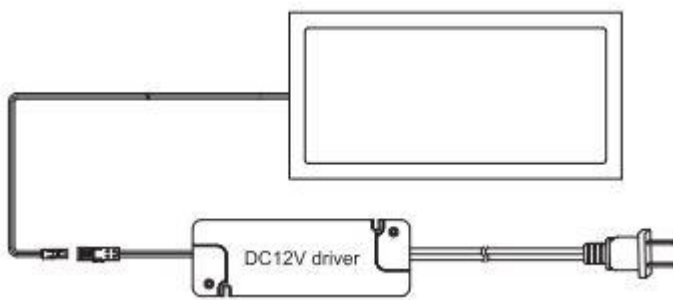
Installation: Using 3M VHB sticker

Material: Aluminium alloy + light guide plate

Application: Kitchen, closet, shelf

Advantage: Save energy, longevity, non-flicker

Main adapter wiring diagram:-



For further details, prices and/or to order contact

+44 (0)1302 741941 | sales@tlwglobal.com | tlwglobal.com

TLW Brunel House, Brunel Close, Harworth, Doncaster, South Yorkshire, DN11 8QA