

Product Name: Swipe CCT CCT LED Dimming Zigbee Wall Switch

Product Code: K30-2038CCTZ



Kit Contents

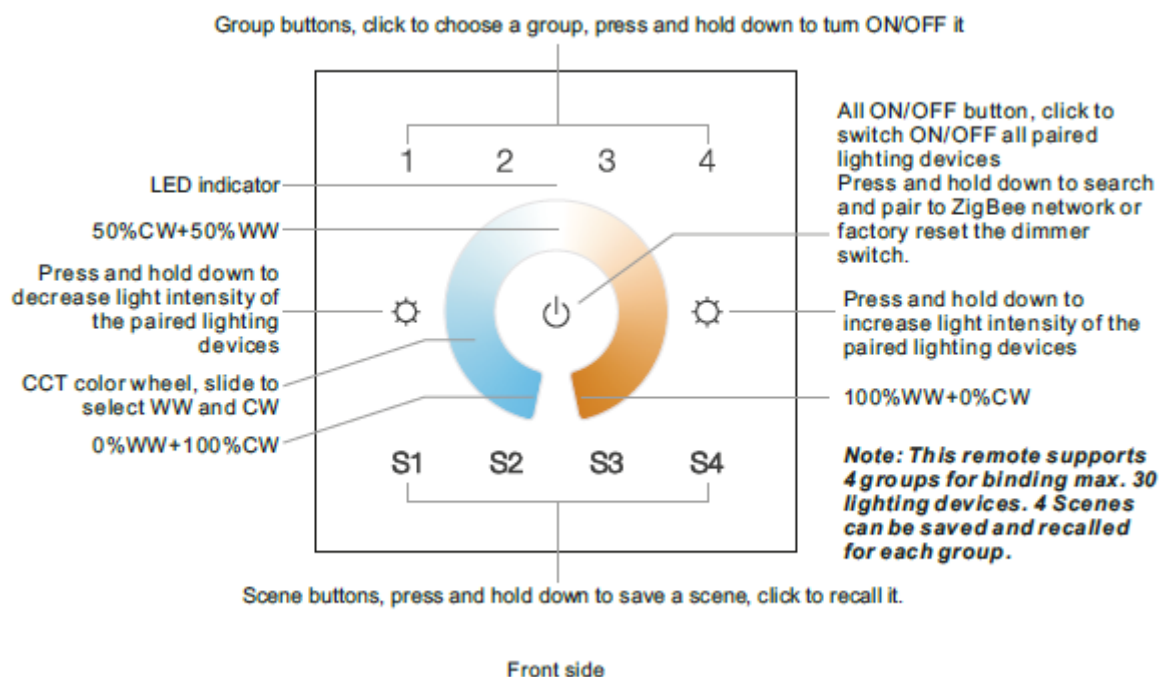
- CCT dimming Zigbee wall switch

Important Safety Information

DISCLAIMER: PLEASE NOTE INSTALLATION SHOULD BE CARRIED OUT BY A QUALIFIED ELECTRICIAN!

- This Zigbee CCT wall switch is a wireless transmitter that communicates with a variety of ZigBee compatible systems. This transmitter sends wireless radio signals that are used to remotely control a compatible system.
- This Zigbee wall switch supports 4 groups for binding max. 30 lighting devices and enables to control tuneable white Zigbee lighting devices.
- DO NOT install with power applied to the device.
- DO NOT expose the device to moisture.

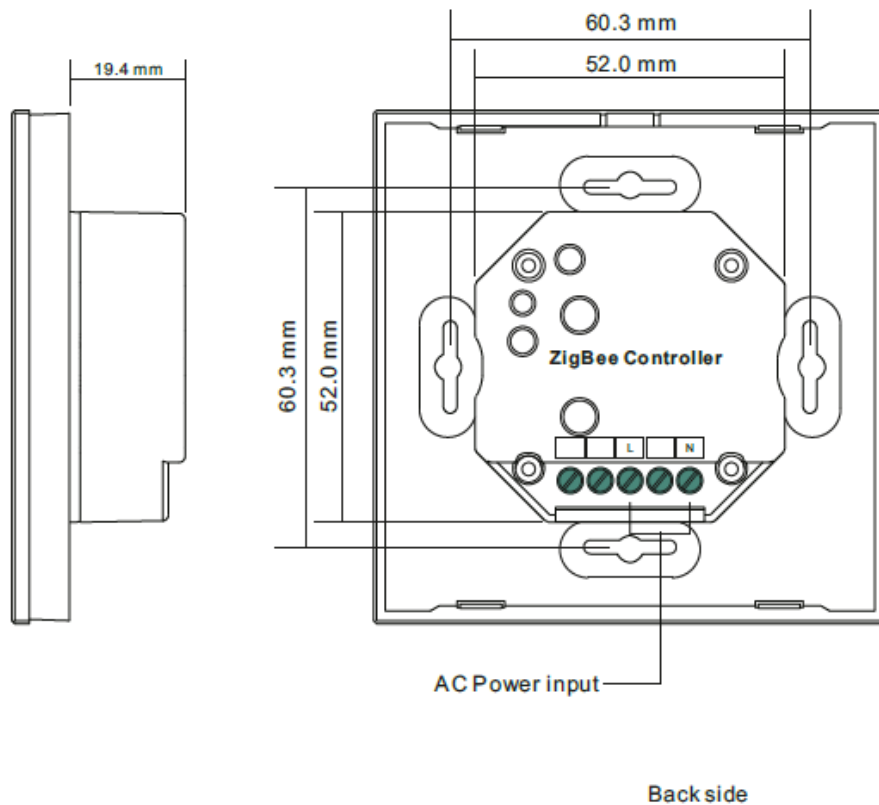
Function Introduction



INSTALLATION GUIDE

Product Name: Swipe CCT CCT LED Dimming Zigbee Wall Switch

Product Code: K30-2038CCTZ



Installation

Zigbee Network Pairing through Coordinator or Hub (Added to a Zigbee Network)

Step 1: Remove the remote from previous zigbee network if it has already been added to it, otherwise pairing will fail. Please refer to the part "Factory Reset Manually".

Step 3: Press and hold down until LED indicator turns on.

LED indicator

1 2 3 4

S1 S2 S3 S4

Step 2: From your zigbee controller or hub interface, choose to add device or accessory and enter Pairing mode as instructed by the controller.

Step 4: Immediately short press to search nearby network, indicator flashes every 1 second, 20 seconds timeout if there is no network. Indicator will then blink 5 times quickly for successful pairing.



For further details, prices and/or to order contact

+44 (0)1302 741941 | sales@tlwglobal.com | tlwglobal.com

TLW Brunel House, Brunel Close, Harworth, Doncaster, South Yorkshire, DN11 8QA

Product Name: Swipe CCT CCT LED Dimming Zigbee Wall Switch

Product Code: K30-2038CCTZ



Note: 1) After pairing successfully, the remote information will appear on the controller or hub interface.
2) No remote information will appear on the hub interface if pairing to Philips Hue Bridge.

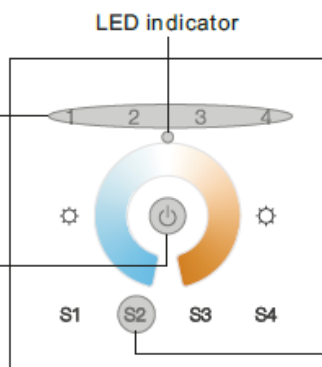
TouchLink to a Zigbee Lighting Device

4. TouchLink to a Zigbee Lighting Device

Step 1: Set the zigbee lighting device to start TouchLink commissioning, please refer to its manual to learn how.

Step 3: Short press any button to choose a group to touchlink.

Step 4: Press and hold down until LED indicator turns on.



Step 2: Bring the remote within 10cm of the lighting device.

ZigBee Lighting Device

Step 5: Immediately short press to start TouchLink commissioning of the remote. LED indicator flashes fast for 3S, then flash 6 times slowly to indicate successful pairing to the device and the light connected to the device will blink twice.

Note: 1) Directly TouchLink (both not added to a ZigBee network), each remote can link with 30 devices.
2) TouchLink after both added to a ZigBee network, each remote can link with max. 30 devices.
3) For Hue Bridge & Amazon Echo Plus, add remote and device to network first then TouchLink.
4) After TouchLink, the remote can control the linked lighting devices.

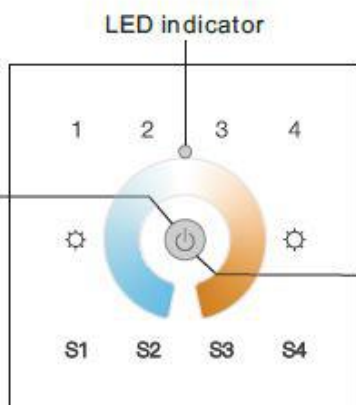
Removed from a Zigbee Network through Coordinator or Hub Interface

1

From your ZigBee controller or hub interface, choose to delete or reset the remote as instructed, indicator flashes 3 times quickly to indicate successful removing.

Factory Reset Manually

Step 1: Press and hold down until LED indicator turns on.



Note: All configuration parameters will be reset after the remote is reset or removed from the network.

Step 2: Immediately short press 5 times continuously, indicator flashes 3 times quickly to indicate successful reset.



For further details, prices and/or to order contact

+44 (0)1302 741941 | sales@tlwglobal.com | tlwglobal.com

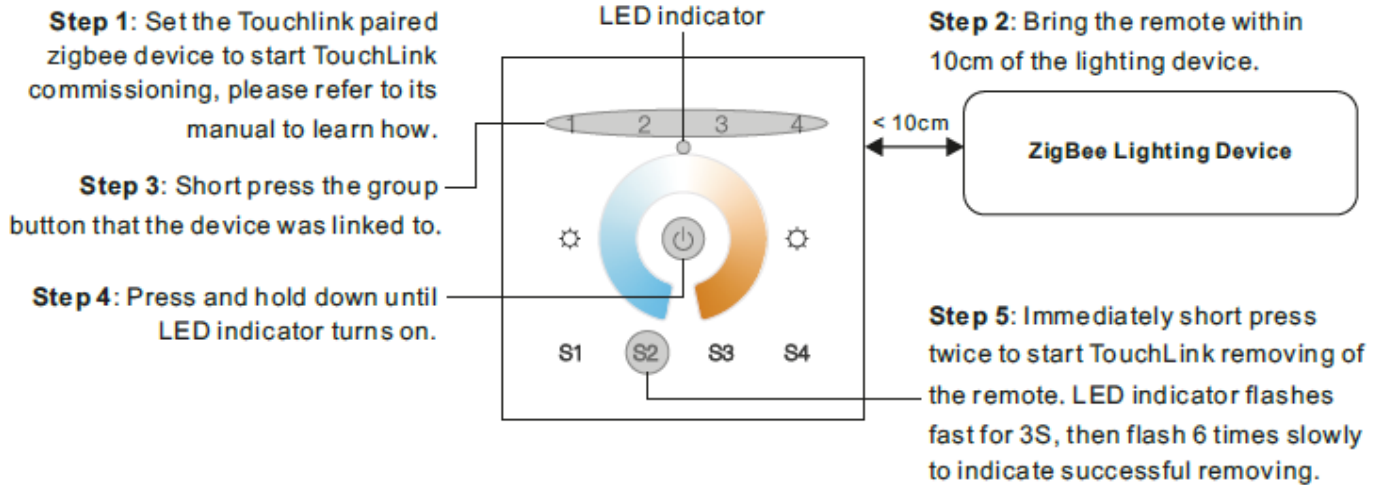
TLW Brunel House, Brunel Close, Harworth, Doncaster, South Yorkshire, DN11 8QA

Product Name: Swipe CCT CCT LED Dimming Zigbee Wall Switch

Product Code: K30-2038CCTZ

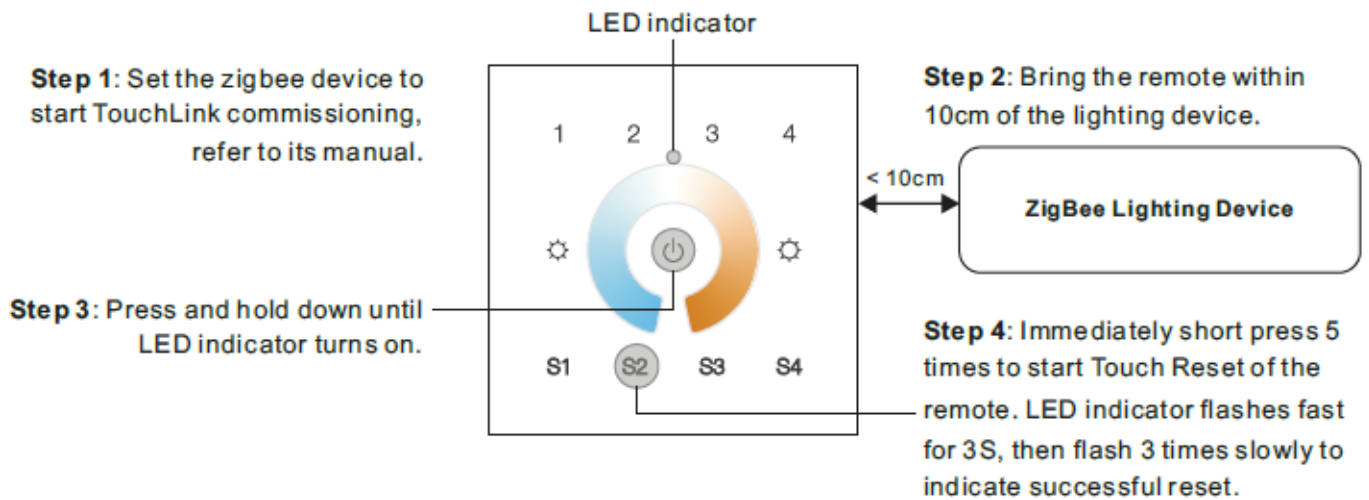


Remove a Touchlink Paired Zigbee Lighting Device



Factory Reset a Lighting Device (Touch Reset)

Note: the device shall be added to a network, the remote added to the same one or not added to any network.



Product Name: Swipe CCT CCT LED Dimming Zigbee Wall Switch

Product Code: K30-2038CCTZ



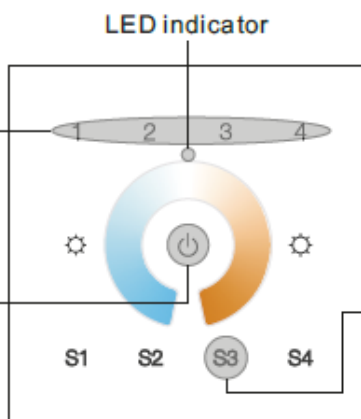
Find and Bind a Zigbee Lighting Device

Note: Make sure the device and remote already added to the same zigbee network.

Step 1: Start find and bind mode on the Zigbee lighting device (initiator node) and enable it to find and bind target, refer to its manual.

Step 2: Short press a group button that you would like to bind the device to.

Step 3: Press and hold down until LED indicator turns on.



ZigBee Lighting Device

Step 4: Short press to enable the remote (target node) to find and bind initiator. LED indicator flashes 4 times for successful binding or twice if binding fails.

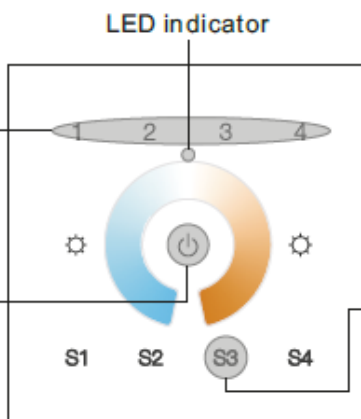
Note: Each remote can bind max. 30 lighting devices.

Find and Unbind a Zigbee Lighting Device

Step 1: Start find and bind mode on the Zigbee lighting device (initiator node) and enable it to find and bind target, refer to its manual.

Step 2: Short press the group button that the device already bound to.

Step 3: Press and hold down until LED indicator turns on.



ZigBee Lighting Device

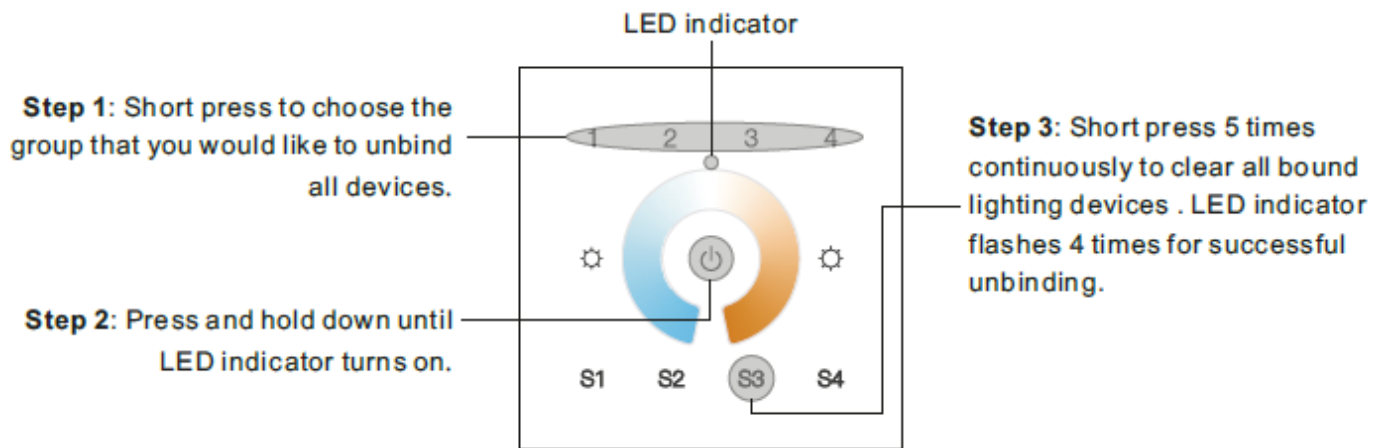
Step 4: Short press twice to enable the remote (target node) to find and unbind initiator. LED indicator flashes 4 times for successful unbinding or twice if unbinding fails.

Product Name: Swipe CCT CCT LED Dimming Zigbee Wall Switch

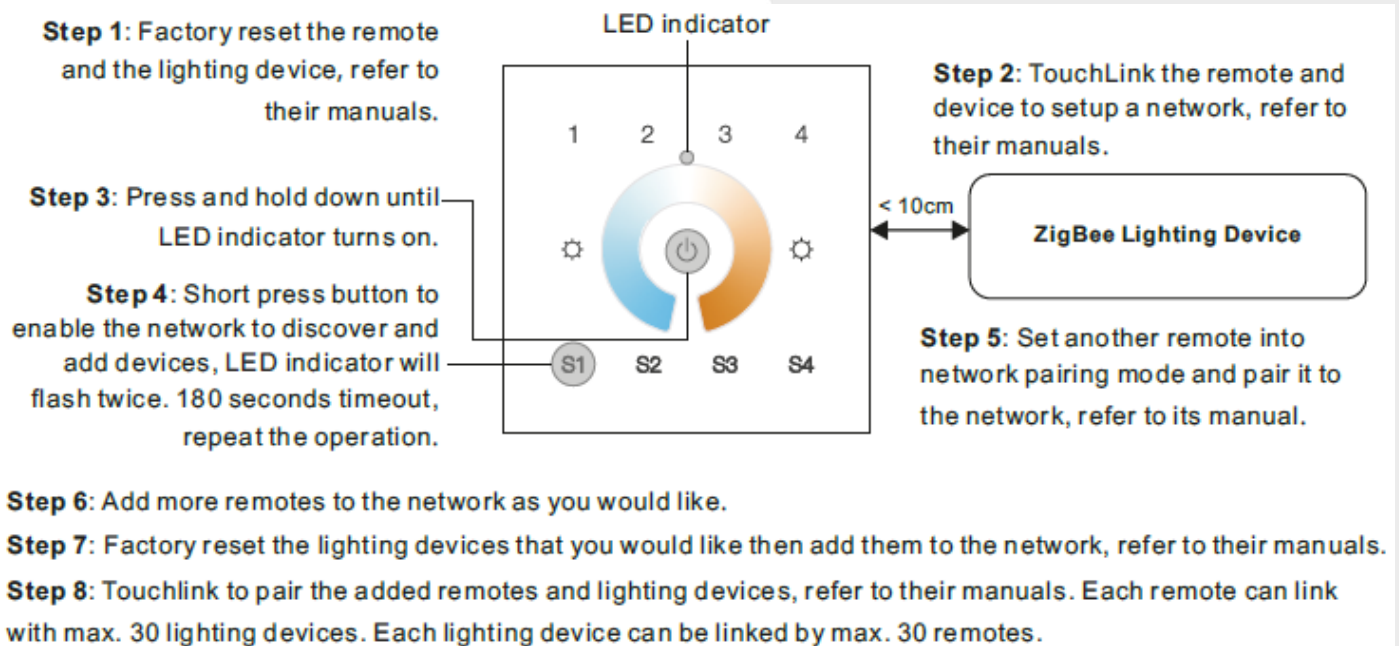
Product Code: K30-2038CCTZ



Clear All Find and Bind Mode Paired Lighting Devices of a Group



Setup a Network & Add Devices to the Network (No Coordinator or Hub Required)



Product Name: Swipe CCT CCT LED Dimming Zigbee Wall Switch

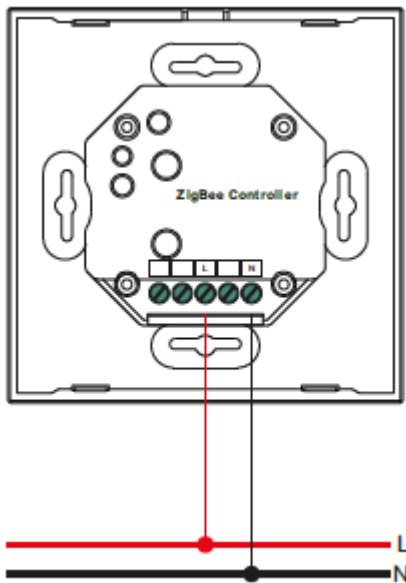
Product Code: K30-2038CCTZ



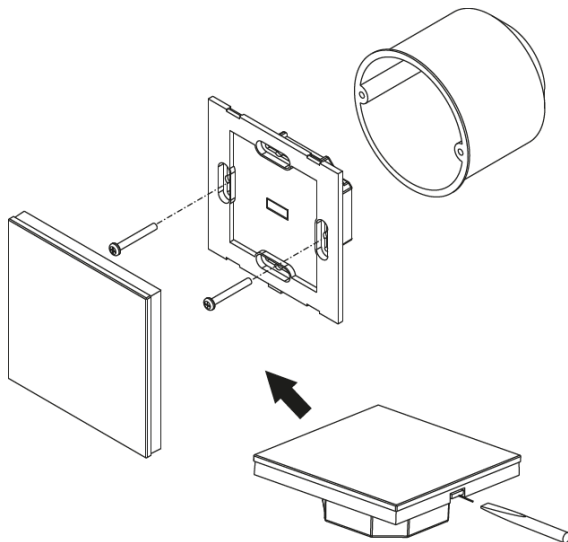
How to Check Whether the Remote Belongs to a Network or not

- 1 Short press any other buttons except group buttons, indicator blinking means the wall switch has already been added to a network, no blinking of indicator means the wall switch does not belong to any network.

Wiring Diagram



Installation



Product Name: Swipe CCT CCT LED Dimming Zigbee Wall Switch

Product Code: K30-2038CCTZ



Other Information

Specifications:

- Zigbee CCT wall switch based on ZigBee 3.0
- Full touch glass interface, smooth CCT and light intensity control
- Enables to pair ZigBee lighting devices via touchlink commissioning without coordinator
- Supports find and bind mode to pair with Zigbee lighting devices in the same network
- Supports 4 groups for binding max. 30 lighting devices
- 2.4 GHz global operation
- Transmission range up to 30m
- Compatible with universal Zigbee Gateway products
- Compatible with universal CCT ZigBee lighting devices

Zigbee Clusters Supported by This Wall Switch Are As Follows:

Input clusters:

- Basic • Power Configuration • Identify • Diagnostics

Output clusters:

- Identify • Scenes • Group • On/off • Level control • Colour control • OTA

OTA

The wall switch supports firmware updating through OTA, and will acquire new firmware from Zigbee controller or hub every 10 minutes automatically.

Product Data

| | |
|---------------------------------|--------------|
| Protocol | ZigBee 3.0 |
| Input Voltage | 100-240VAC |
| Transmission Frequency | 2.4GHz |
| Transmission Range (free field) | 30m |
| Protection Type | IP20 |
| Dimming Range | 0.1%-100% |
| Dimensions | 86x86x29.1mm |



For further details, prices and/or to order contact

+44 (0)1302 741941 | sales@tlwglobal.com | tlwglobal.com

TLW Brunel House, Brunel Close, Harworth, Doncaster, South Yorkshire, DN11 8QA