

Product Name: Swipe Single Single Colour LED Dimming Zigbee Wall Switch

Product Code: K30-2038SCZ



Kit Contents

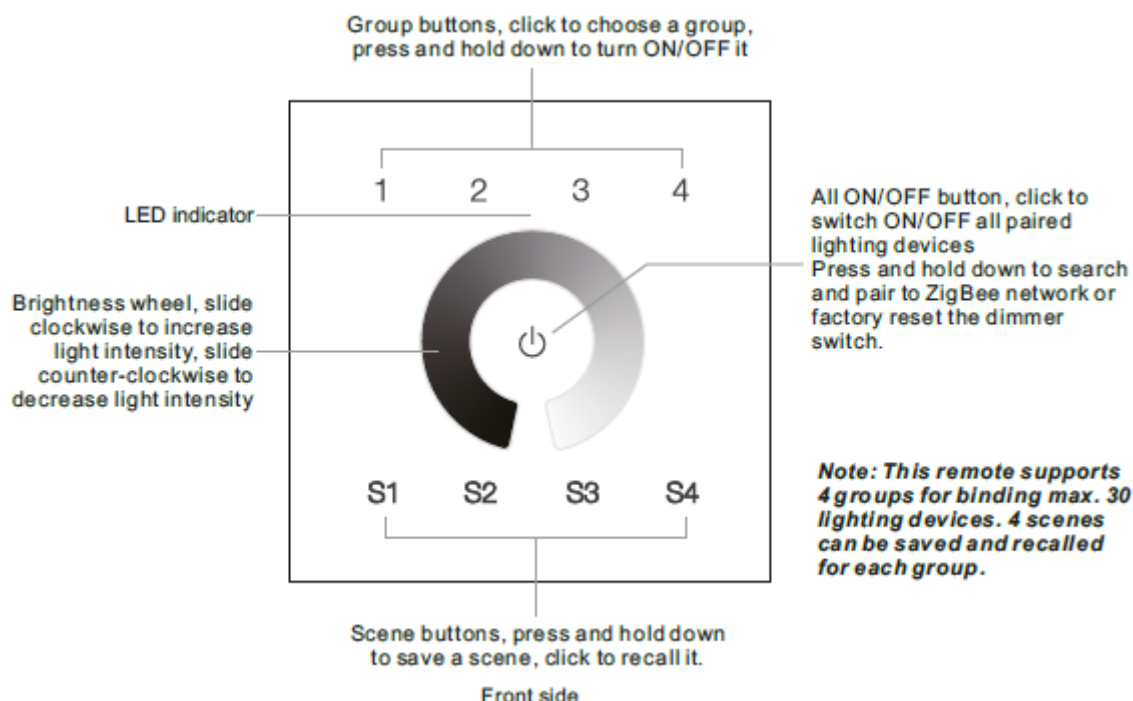
- Single colour dimming Zigbee wall switch

Important Safety Information

DISCLAIMER: PLEASE NOTE INSTALLATION SHOULD BE CARRIED OUT BY A QUALIFIED ELECTRICIAN!

- This Zigbee dim wall switch is a wireless transmitter that communicates with a variety of Zigbee compatible systems. This transmitter sends wireless radio signals that are used to remotely control a compatible system.
- This Zigbee wall switch supports 4 groups for binding max. 30 lighting devices and enables to control single colour Zigbee lighting devices.
- DO NOT install with power applied to the device.
- DO NOT expose the device to moisture.

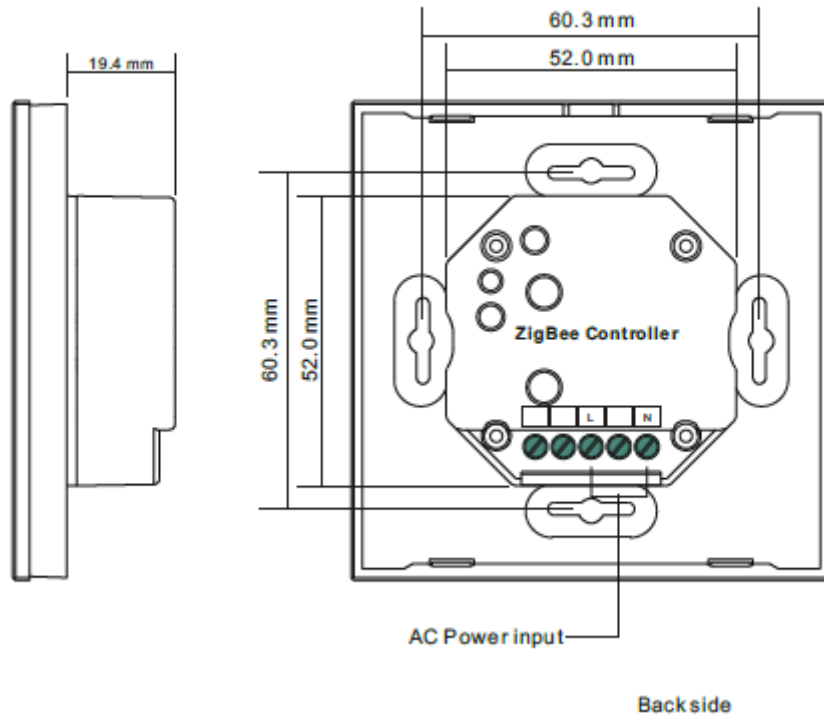
Function Introduction



INSTALLATION GUIDE

Product Name: Swipe Single Single Colour LED Dimming Zigbee Wall Switch

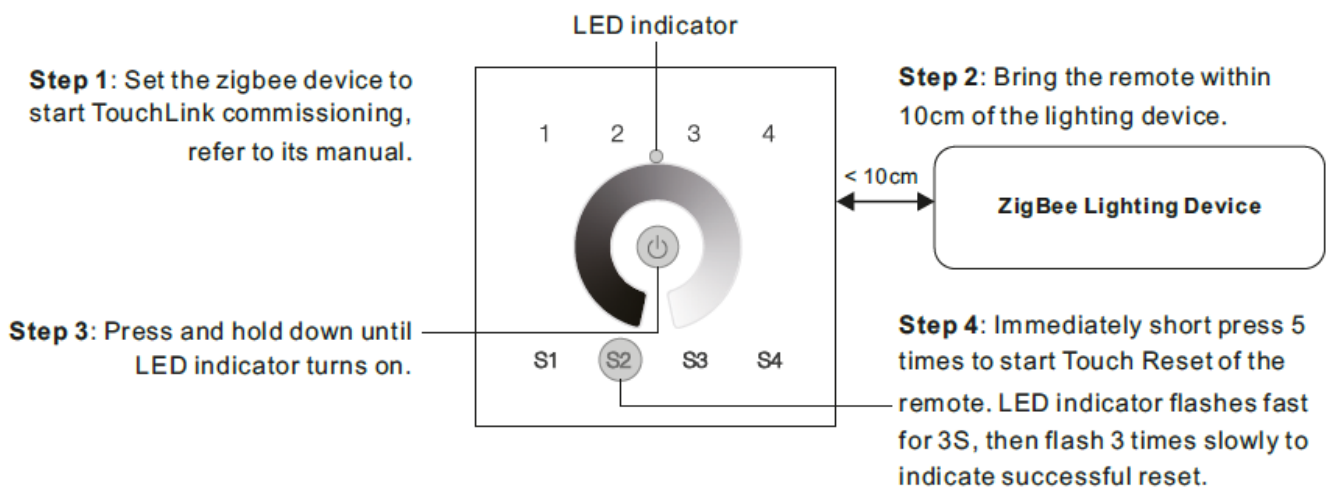
Product Code: K30-2038SCZ



Installation

Zigbee Network Pairing through Coordinator or Hub (Added to a Zigbee Network)

Note: the device shall be added to a network, the remote added to the same one or not added to any network.



For further details, prices and/or to order contact

+44 (0)1302 741941 | sales@tlwglobal.com | tlwglobal.com

TLW Brunel House, Brunel Close, Harworth, Doncaster, South Yorkshire, DN11 8QA

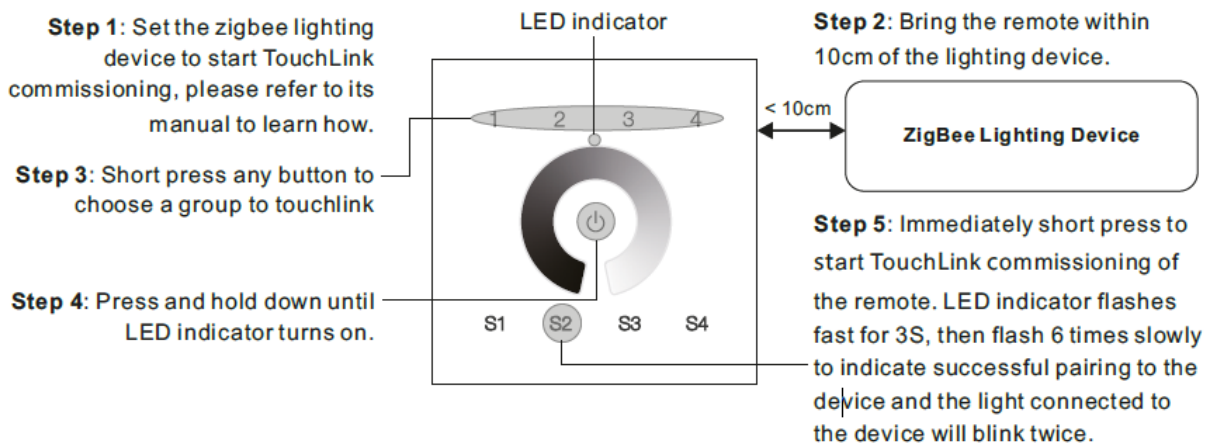
Product Name: Swipe Single Single Colour LED Dimming Zigbee Wall Switch

Product Code: K30-2038SCZ



Note: 1) After pairing successfully, the remote information will appear on the controller or hub interface.
2) No remote information will appear on the hub interface if pairing to Philips Hue Bridge.

TouchLink to a Zigbee Lighting Device

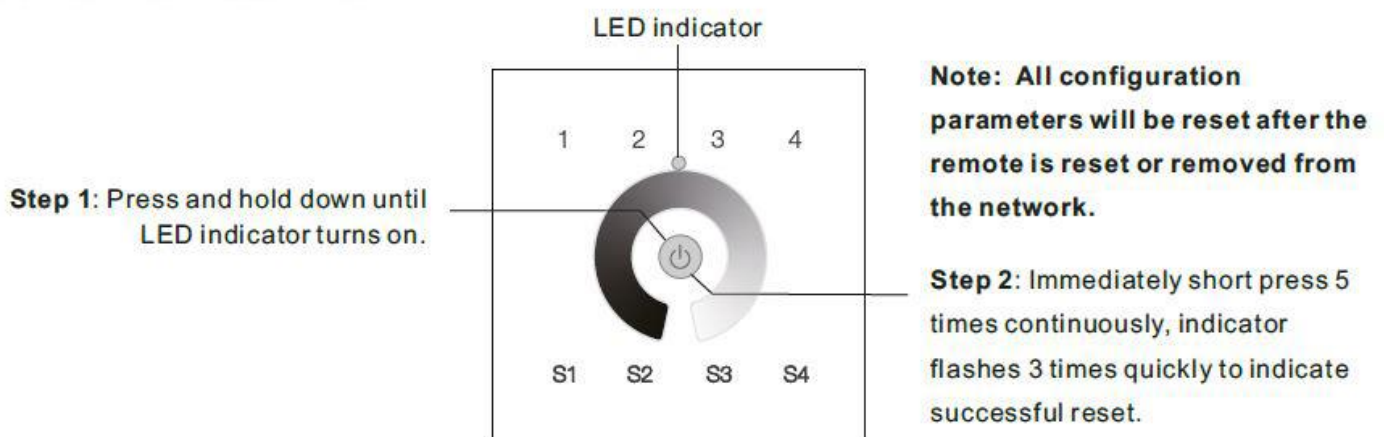


Note: 1) Directly TouchLink (both not added to a ZigBee network), each remote can link with 30 devices.
2) TouchLink after both added to a ZigBee network, each remote can link with max. 30 devices.
3) For Hue Bridge & Amazon Echo Plus, add remote and device to network first then TouchLink.
4) After TouchLink, the remote can control the linked lighting devices.

Removed from a Zigbee Network through Coordinator or Hub Interface

- 1 From your ZigBee controller or hub interface, choose to delete or reset the remote as instructed, indicator flashes 3 times quickly to indicate successful removing.

Factory Reset Manually



For further details, prices and/or to order contact

+44 (0)1302 741941 | sales@tlwglobal.com | tlwglobal.com

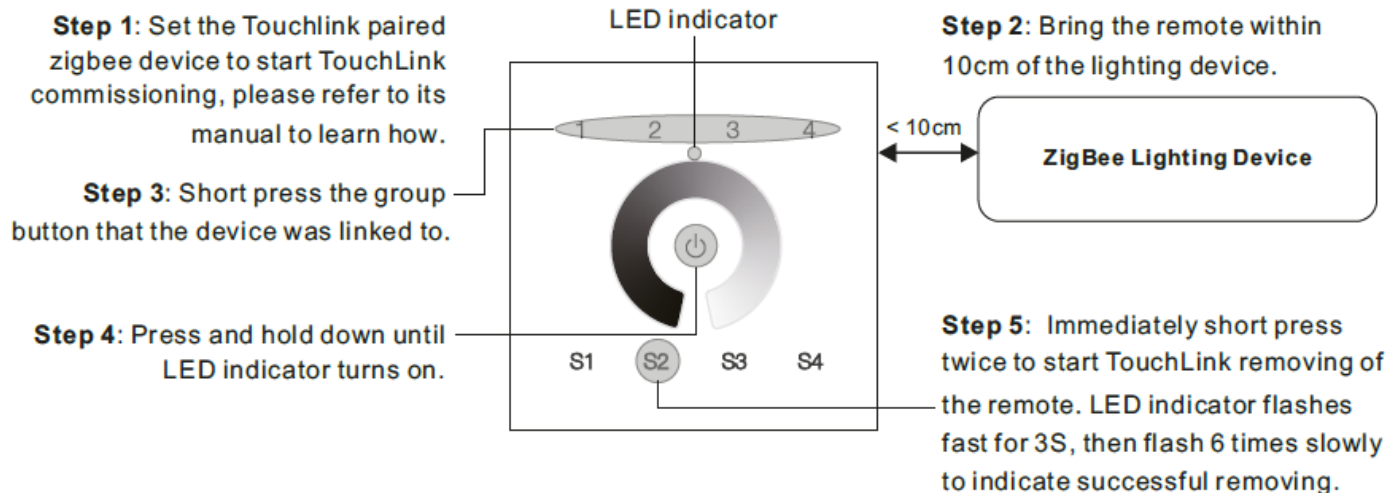
TLW Brunel House, Brunel Close, Harworth, Doncaster, South Yorkshire, DN11 8QA

Product Name: Swipe Single Single Colour LED Dimming Zigbee Wall Switch

Product Code: K30-2038SCZ

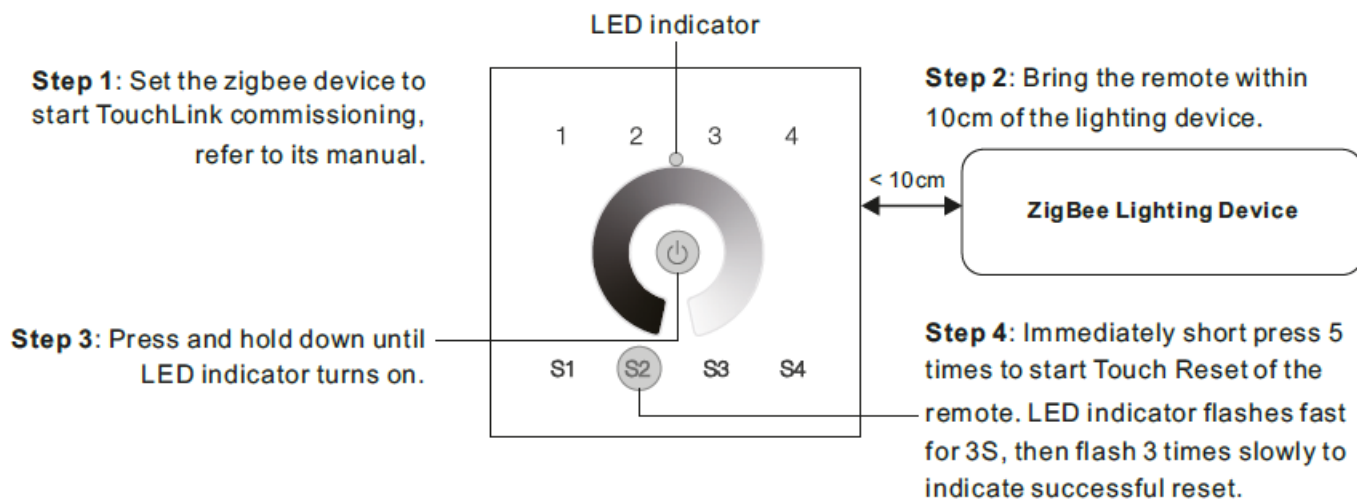


Remove a Touchlink Paired Zigbee Lighting Device



Factory Reset a Lighting Device (Touch Reset)

Note: the device shall be added to a network, the remote added to the same one or not added to any network.



Product Name: Swipe Single Single Colour LED Dimming Zigbee Wall Switch

Product Code: K30-2038SCZ



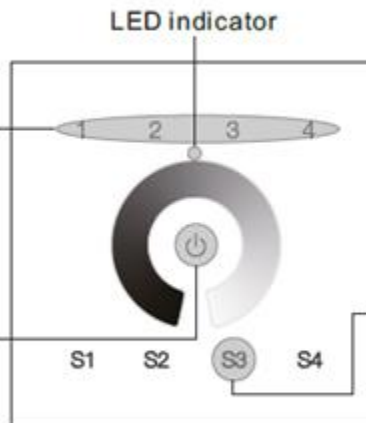
Find and Bind a Zigbee Lighting Device

Note: Make sure the device and remote already added to the same zigbee network.

Step 1: Start find and bind mode on the Zigbee lighting device (initiator node) and enable it to find and bind target, refer to its manual.

Step 2: Short press a group button that you would like to bind the device to.

Step 3: Press and hold down until LED indicator turns on.



ZigBee Lighting Device

Step 4: Short press to enable the remote (target node) to find and bind initiator. LED indicator flashes 4 times for successful binding or twice if binding fails.

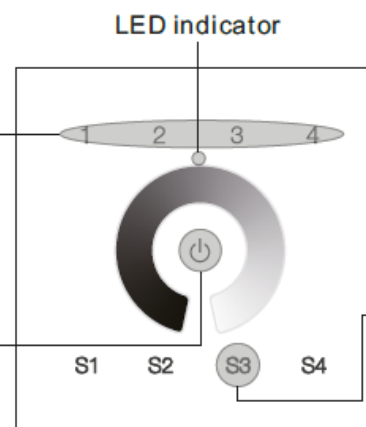
Note: Each remote can bind max. 30 lighting devices.

Find and Unbind a Zigbee Lighting Device

Step 1: Start find and bind mode on the Zigbee lighting device (initiator node) and enable it to find and bind target, refer to its manual.

Step 2: Short press the group button that the device already bound to.

Step 3: Press and hold down until LED indicator turns on.



ZigBee Lighting Device

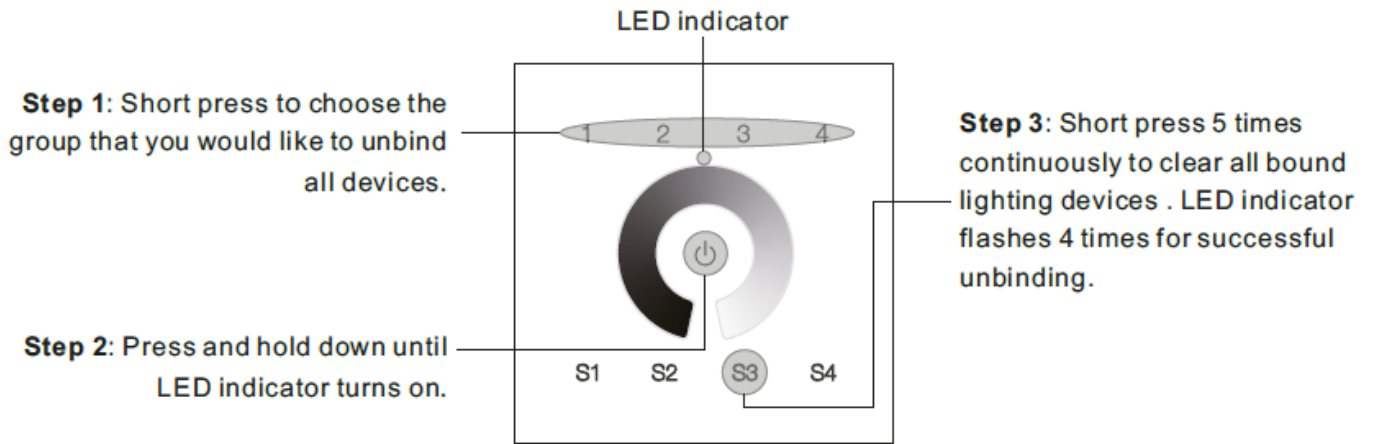
Step 4: Short press twice to enable the remote (target node) to find and unbind initiator. LED indicator flashes 4 times for successful unbinding or twice if unbinding fails.

Product Name: Swipe Single Single Colour LED Dimming Zigbee Wall Switch

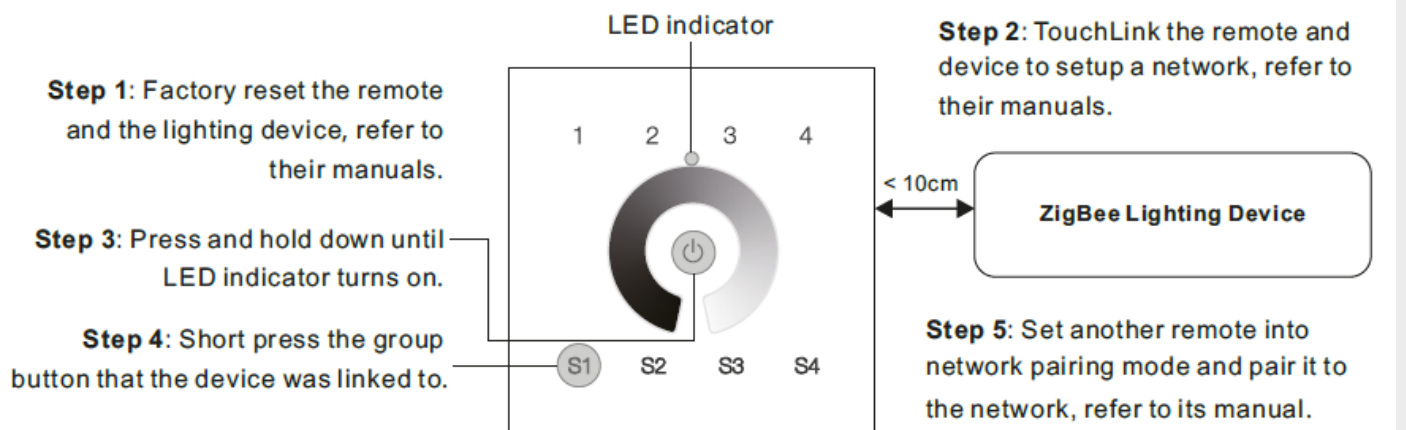
Product Code: K30-2038SCZ



Clear All Find and Bind Mode Paired Lighting Devices of a Group



Setup a Network & Add Devices to the Network (No Coordinator or Hub Required)



Step 6: Add more remotes to the network as you would like.

Step 7: Factory reset the lighting devices that you would like then add them to the network, refer to their manuals.

Step 8: Touchlink to pair the added remotes and lighting devices, refer to their manuals. Each remote can link with max. 30 lighting devices. Each lighting device can be linked by max. 30 remotes.

INSTALLATION GUIDE

Product Name: Swipe Single Single Colour LED Dimming Zigbee Wall Switch

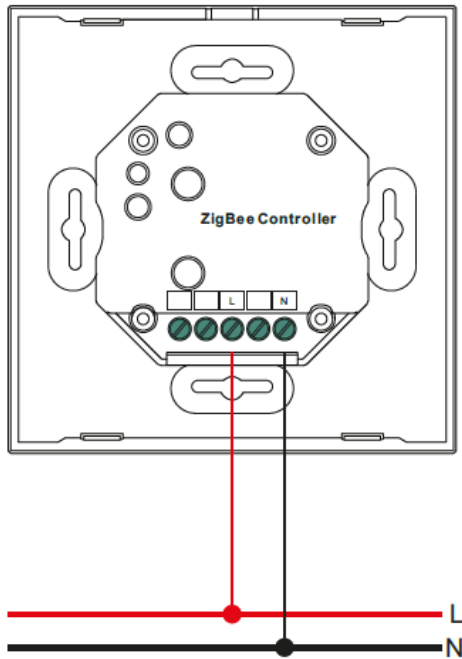
Product Code: K30-2038SCZ



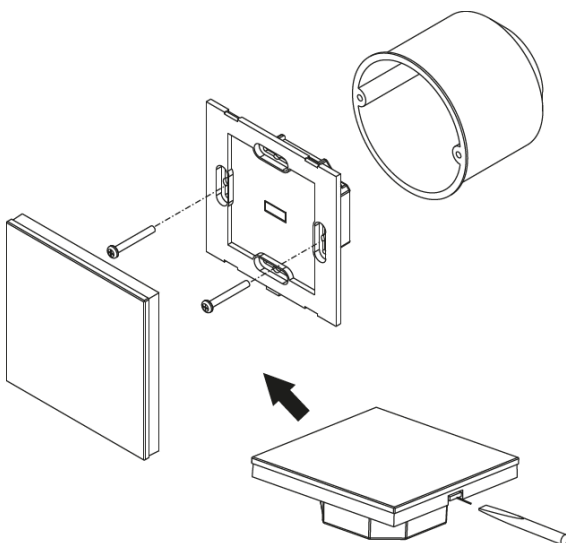
How to Check Whether the Remote Belongs to a Network or not

- 1 Short press any other buttons except group buttons, indicator blinking means the wall switch has already been added to a network, no blinking of indicator means the wall switch does not belong to any network.

Wiring Diagram



Installation



For further details, prices and/or to order contact

+44 (0)1302 741941 | sales@tlwglobal.com | tlwglobal.com

TLW Brunel House, Brunel Close, Harworth, Doncaster, South Yorkshire, DN11 8QA

Product Name: Swipe Single Single Colour LED Dimming Zigbee Wall Switch

Product Code: K30-2038SCZ



Other Information

Specifications:

- Zigbee wireless dimmer switch based on Zigbee 3.0
- Full touch glass interface, smooth light intensity control
- Enables to pair Zigbee lighting devices via touchlink commissioning without coordinator
- Supports find and bind mode to pair with Zigbee lighting devices
- Supports 4 groups for binding max. 30 lighting devices
- 2.4 GHz global operation
- Transmission range up to 30m
- Compatible with universal Zigbee Gateway products
- Compatible with universal Zigbee dimmable lighting devices

Zigbee Clusters Supported by This Wall Switch Are As Follows:

Input clusters:

- Basic • Power Configuration • Identify • Diagnostics

Output clusters:

- Identify • Scenes • Group • On/off • Level control • OTA

OTA

The wall switch supports firmware updating through OTA, and will acquire new firmware from Zigbee controller or hub every 10 minutes automatically.

Product Data

Protocol	ZigBee 3.0
Input Voltage	100-240VAC
Transmission Frequency	2.4GHz
Transmission Range (free field)	30m
Protection Type	IP20
Dimming Range	0.1%-100%
Dimensions	86x86x29.1mm



For further details, prices and/or to order contact

+44 (0)1302 741941 | sales@tlwglobal.com | tlwglobal.com

TLW Brunel House, Brunel Close, Harworth, Doncaster, South Yorkshire, DN11 8QA