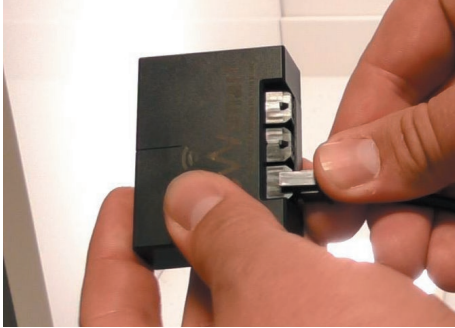
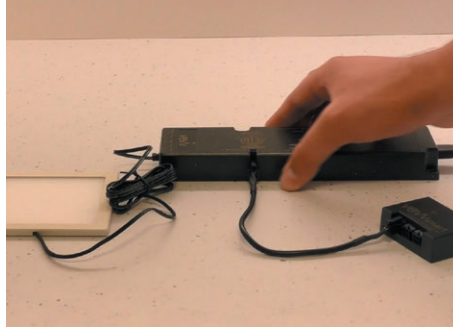


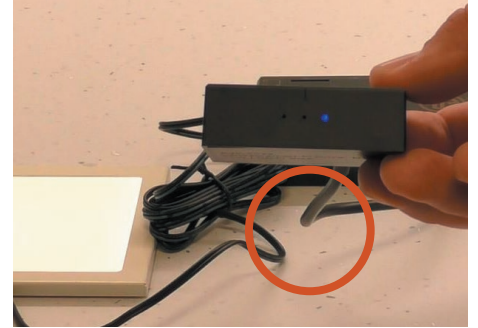
HOW TO CONNECT VEWsmart WI-FI Driver & Control Module TO THE VEWSMART APP



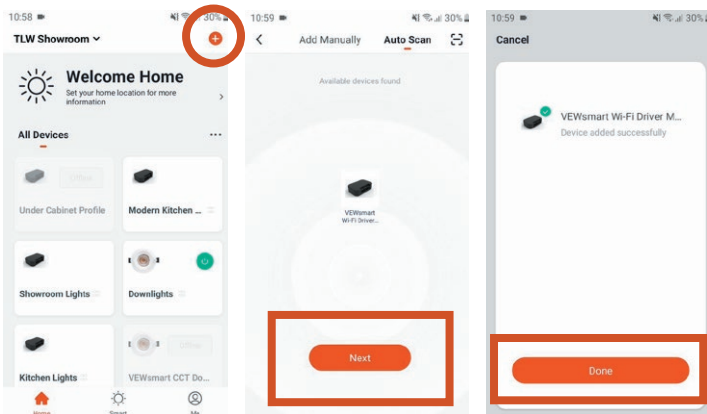
1. Plug either cable into the left-hand side of the control module



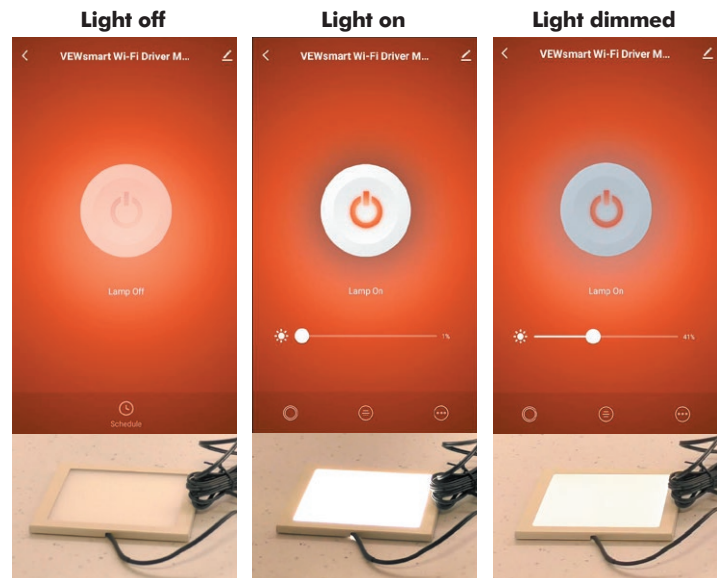
2. Plug it into the driver. The light will dim



3. Ensure that the blue light is flashing



4. Open the VEWsmart app, select the plus icon in the top right corner and press "autoscan" to add lights via the VEWsmart app. Once the device has been discovered, press "next". Once the device has been added successfully, press "done"



5. Ensure the lights can be turned on/off as well as dimmed via the VEWsmart app

SETUP ERRORS

If the blue light is flashing slowly or not flashing at all, follow the next steps. Reinsert the pin and press and hold for five seconds



vevsmart™