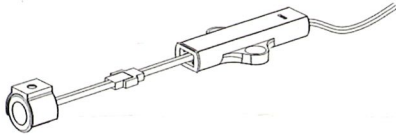


CODE: **N28-0001 /D /T**

PRODUCT: IR sensor switch (door trigger)



IMPORTANT SAFETY INSTRUCTIONS

1. For indoor use only.
2. Do not disassemble the product.

TECHNICAL PARAMETERS

1. Power supply: DC 12V
2. Max switching capacity: 60W
3. Cable length: 1200mm
4. Dust-proof, against solid things and waterproof level: IP20 (Ref. EN 60529-EN 60598-1)
5. Sensor distance: 5-10cm

MAINTENANCE

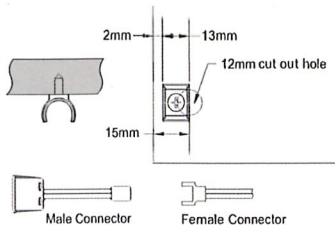
1. The external flexible cable or cord of this luminaire can't be replaced; if the cord is damaged, the luminaire shall be destroyed. Different materials require different types of fittings. Always choose screws and plugs that are specially suited to the material.
2. Use a dry cloth, never a strong cleaning agent.

INSTALLATION

X1

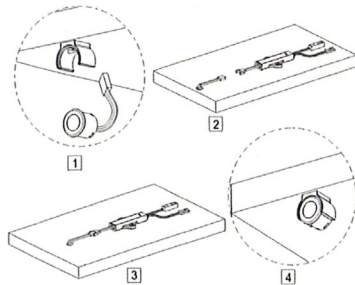


1. Installation way one: as shown below, fix the clip, then make a hole $\varnothing 12\text{mm}$. Plug male connector through the roof. Then connect the female connector, fix switch to the clip, fix switch controller to the wood panel.

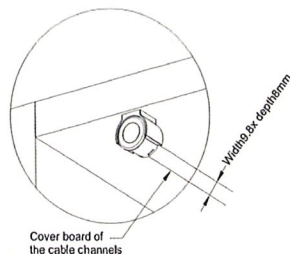
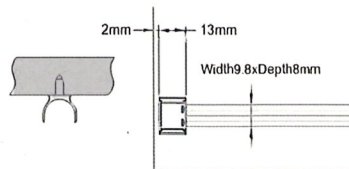


Remark: separate the male and female connector, plug male connector through the wood panel, then connect the female connector

It is not necessary to fit the rubber pad each time. You will need to fit the rubber pad when the distance of the sensor head to the side panel or top panel is less than 3mm, otherwise you must not fit it.
The distance between the sensor head with the (front) door panel needs to be equal or greater than 2mm when fit with the rubber pad.



2. Installation way two: open cable channel on the wood panel as figure picture, fix related length of cable channel base, plug the sensor switch cords through the hole of back board. Then fix sensor switch, install the cover board of the cable channels.



SIZE PICTURE SHOWING

